

# Service Information Letter 3\_2011

## 1 MAS-100 RCT Battery Problem

Instruments affected: all MAS-100 and MAS-100 Ex.

Change level:

- optional
- recommend by MBV
- mandatory
- for information only

## 2 Reason

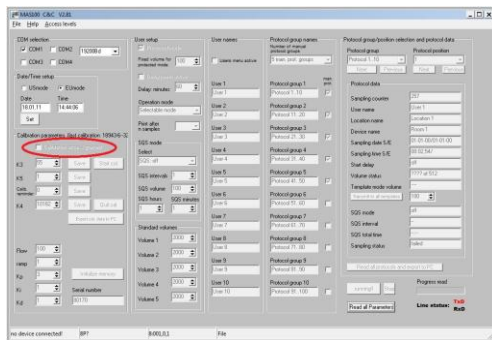
If the mainboard is on stock for more than 1-1.5 years the RCT battery can be completely empty. This Service Information Letter explains the technical background of this effect and how it can be solved.

While the lithium battery by itself has a shelf life of 10 years it looks different on board as the (older) IC technology draws quite a bit of current compared to today's standards (= estimated shelf life of the complete assembly is 1-1.5 years).

The main board is designed to use the lithium battery only when no main battery is present. While this approach is working fine for units in use; additional actions need to be taken when a long shelf time has drained the battery completely.

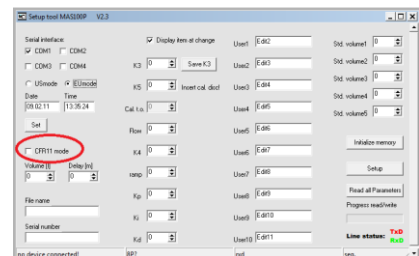
## 3 Procedure

For the time being its simplest way is to source a 3V Lithium CR 1225 battery locally and exchange it to the old one on the main board. The instrument will be up and running after a calibration and setting of the clock.



To enable the calibration Mode you need to connect the instrument to the computer with the software "MAS-100 C&C V2.81" and Firmware V. 5.0x and remove the tick in the check box "Calibration access granted" as indicated on the picture left.

If you are using an older Firmware please install the software M1PSTV23.exe (STM1PV23) and remove the check on CFR11 Mode as indicated on the picture right.



Stäfa, February 10<sup>th</sup> 2011

Beat Glauser

MBV AG  
CTO